

A collection of material samples including wood, fabric, and leather. Two wooden legs are visible in the top left. A light green and a dark brown cylindrical object lie horizontally. Three fabric swatches are shown: a light grey woven fabric, a brown textured fabric, and a green textured fabric. The background is a light grey textured surface.

# INCLASS

## VARYA TAPIZ FINISHES BOOK

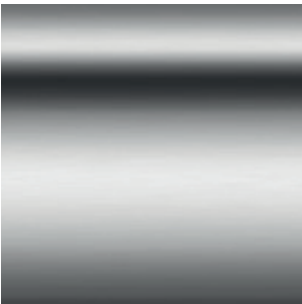
Fabrics / Leathers / Materials



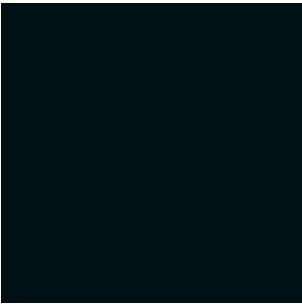
# BASES

## STEEL BASES & ARMS

### CHROME



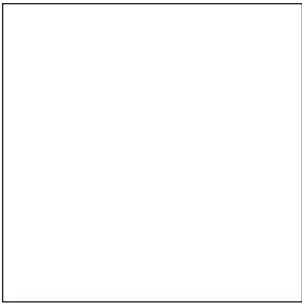
### M1 COLOURS



B00



Aluminum



W01

### M2 COLOURS



M56



B40



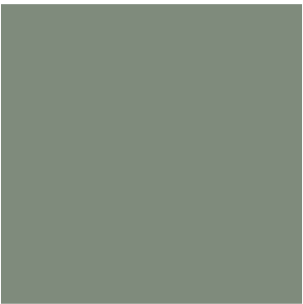
B36



G49



M38



V74



B44



G42



Y62



M82



P70



Rust Brown



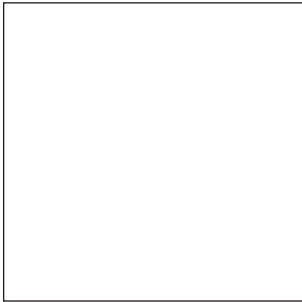
Rust Grey

# BASES

## ALUMINUM BASES



B00



W01



POLISHED

# BASES

## WOODEN BASES

### SOLID WOOD

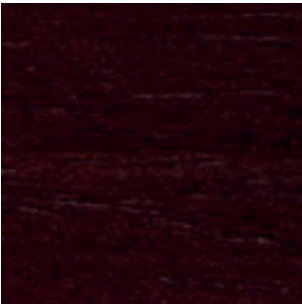
#### OAK



Natural Stain



Walnut Stain



Wenge Stain

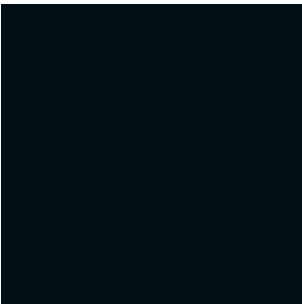


Black Stain

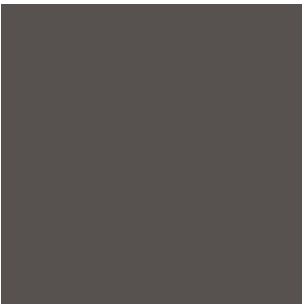
# BASES

## POLYPROPYLENE BASES

### PP1 COLOURS



B00



M56



B40



B36



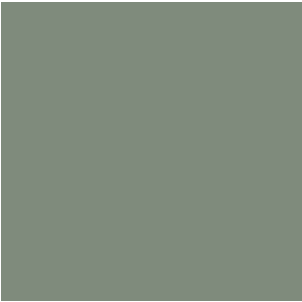
B44



M38



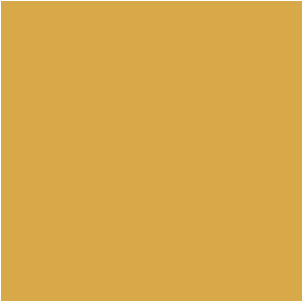
V16



V74



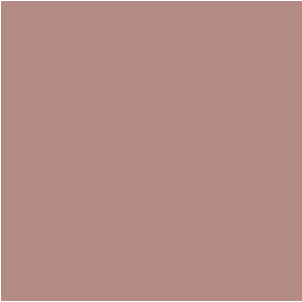
G42



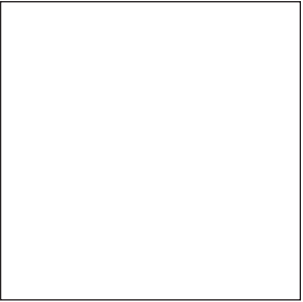
Y62



M82



P70



W01

# G1 - ASIS<sup>NEW</sup>

## TECHNICAL DATA

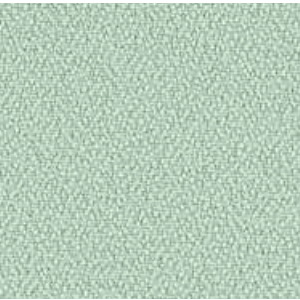
- Composition:**  
100% polyester.
- Light fastness:**  
5 - 6, ISO 105 B02, Method 2.
- Abrasion:**  
100.000 Martindale EN ISO 12947-2.
- Resistance to pilling:**  
4 - 5, ISO 12945-2:002.
- Rubbing fastness in humid state:**  
4, ISO 105-X12.
- Rubbing solvents:**  
4, ISO 105-X12.
- Tear strength:**  
Warp 140N.  
Weft 110N, EN ISO 13937-3.
- Flammability:**  
EN 1021 - 1/2.  
BS 5852 0.  
BS 7176 Low Hazard.  
CAL TB 117 Section 1.  
NFPA 260 Class 1.  
Regulation n° 118 UNECE Annexed 6.  
IMO MSC.307 (88) Annexed I Part 8.

**Width:** 140cm  
**Weight:** 335gr/m<sup>2</sup>

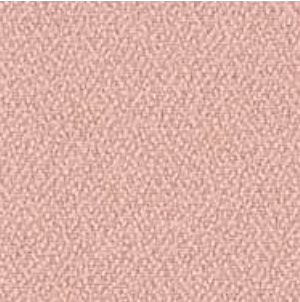


\*\*\*Batch to batch variations may occur within commercial tolerances.

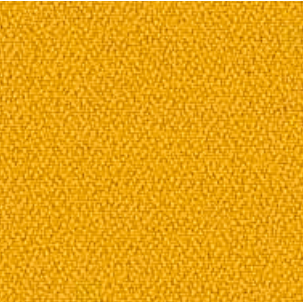
Note:  
- The real colours and tones of the fabrics may differ from the digital image due to the scan process and the colour calibration of the different screens. Always request real fabric samples before ordering.  
- Consult our Fabric and Leather Matrix to know about the availability of this material by product line.



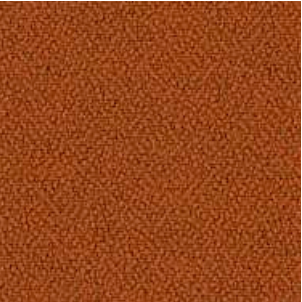
198



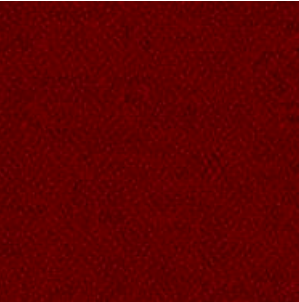
315



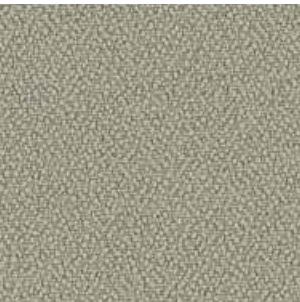
88



122



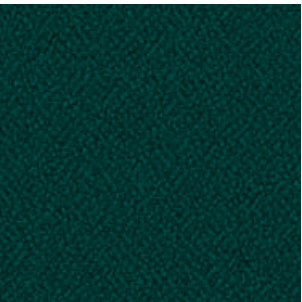
4011



422



77



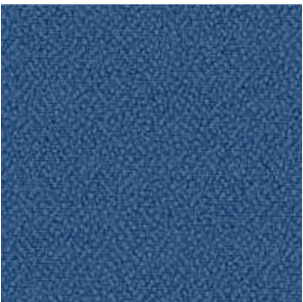
47



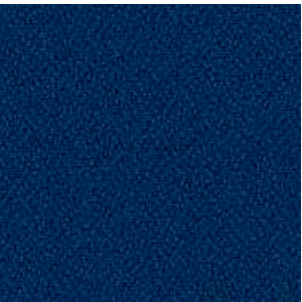
292



86



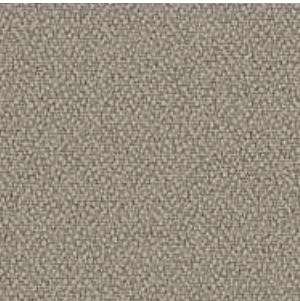
4



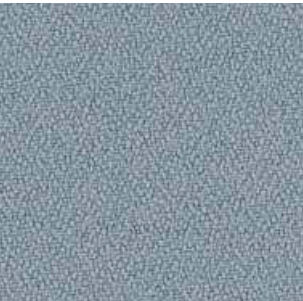
5



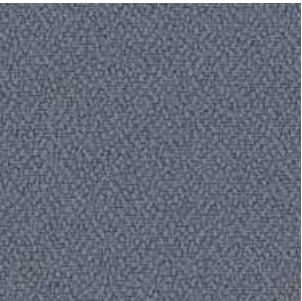
26



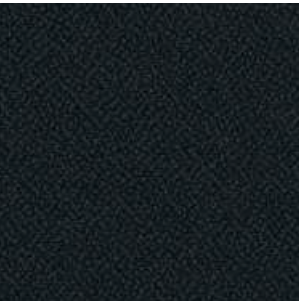
132



170



108



9



# G2 - ARS<sup>NEW</sup>

## TECHNICAL DATA

- Composition:**  
100% polyester.
- Light fastness:**  
5, ISO 105 B02, Method 2.
- Abrasion:**  
90.000 Martindale EN ISO 12947-2.
- Resistance to pilling:**  
4 - 5, ISO 12945-2:002.
- Rubbing fastness in humid state:**  
5, ISO 105-X12:2001.
- Rubbing solvents:**  
4 - 5, ISO 105-X12:2001.
- Seam strength:**  
Warp 3,7mm.  
Weft 0,2mm, EN ISO 13936-2.
- Seam strength:**  
Warp 75,6N.  
Weft 65,1N, EN ISO 13937-3.
- Flammability:**  
EN 1021 - 1 (cigarette).
- Environment:**  
OEKO-TEX® Standard 100.

**Width:** 140cm  
**Weight:** 250gr/m²



\*\*\*Batch to batch variations may occur within commercial tolerances.

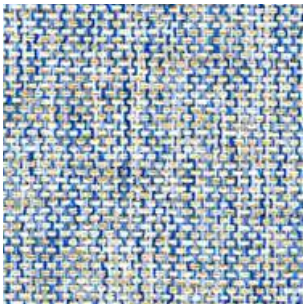


Note:

- The real colours and tones of the fabrics may differ from the digital image due to the scan process and the colour calibration of the different screens. Always request real fabric samples before ordering.
- Consult our Fabric and Leather Matrix to know about the availability of this material by product line.



90



74



27



59



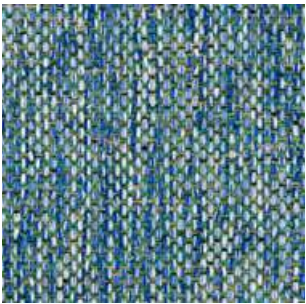
68



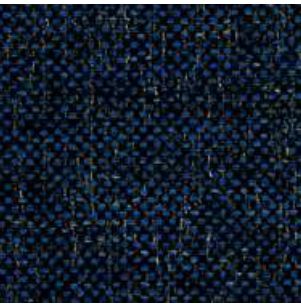
45



35



75



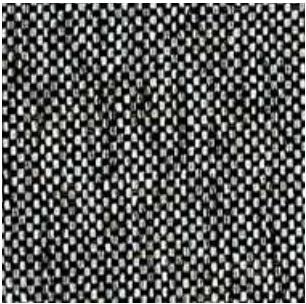
79



87



88



98



99



# G2 - NOK<sup>NEW</sup>

## TECHNICAL DATA

- Composition:**  
100% polyester.
- Light fastness:**  
4 - 5, EN ISO 105 B02, Method 2.
- Abrasion:**  
45.000 Martindale EN ISO 12947-2.
- Resistance to pilling:**  
4 - 5, EN ISO 12945-2:2002.
- Rubbing fastness in humid state:**  
4 - 5, ISO 105-X12:2001.
- Rubbing solvents:**  
4 - 5, ISO 105-X12:2001.
- Seam strength:**  
Warp 4,0mm.  
Weft 3,8mm, EN ISO 13936-2.
- Tear strength:**  
Warp exceed 68,8N.  
Weft exceed 68,8N, EN ISO 13937-3.
- Flammability:**  
EN 1021 - 1 (cigarette).  
BS 5852: Part 1: 1979, Ignition source 0  
BS 5852: Part 1: 1979, Ignition source 1.
- Environment:**  
OEKO-TEX® Standard 100.

**Width:** 140cm  
**Weight:** 330gr/m²



\*\*\*Batch to batch variations may occur within commercial tolerances.



Note:

- The real colours and tones of the fabrics may differ from the digital image due to the scan process and the colour calibration of the different screens. Always request real fabric samples before ordering.
- Consult our Fabric and Leather Matrix to know about the availability of this material by product line.



2



6



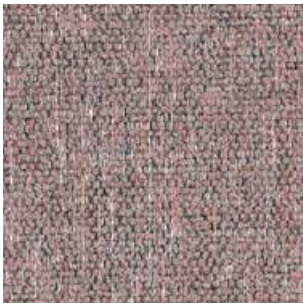
45



59



56



61



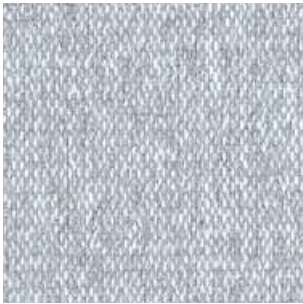
69



79



39



81



90



95



99



# G2 - PIXEL

## TECHNICAL DATA

- Composition:**  
100% polyolefin.
- Light fastness:**  
5 - 6, UNE-EN ISO 105-B02:2001 +A1:2002. Method 2.
- Abrasion:**  
40.000 Martindale EN ISO 14465:2004.
- Resistance to pilling:**  
4 - 5, UNE-EN 14465:2004.
- Dye fastness to rubbing:**  
Wet 4 - 5.  
Dry 4 - 5, UNE-EN ISO 105-X12:2003.
- Tear Resistance:**  
Warp 120N.  
Weft 130N UNE-EN ISO 13937-3:2001.
- Flammability:**  
EN 1021-1:2015 (cigarette)  
BS 5852:2006 (cigarette)  
DIN 66084:2003-7 classification P- c  
CAL TB 117:2013 Section 1: COVER FABRIC TEST NFPA 260:2013 CLASS 1.

**Width:** 140cm  
**Weight:** 255gr/m²

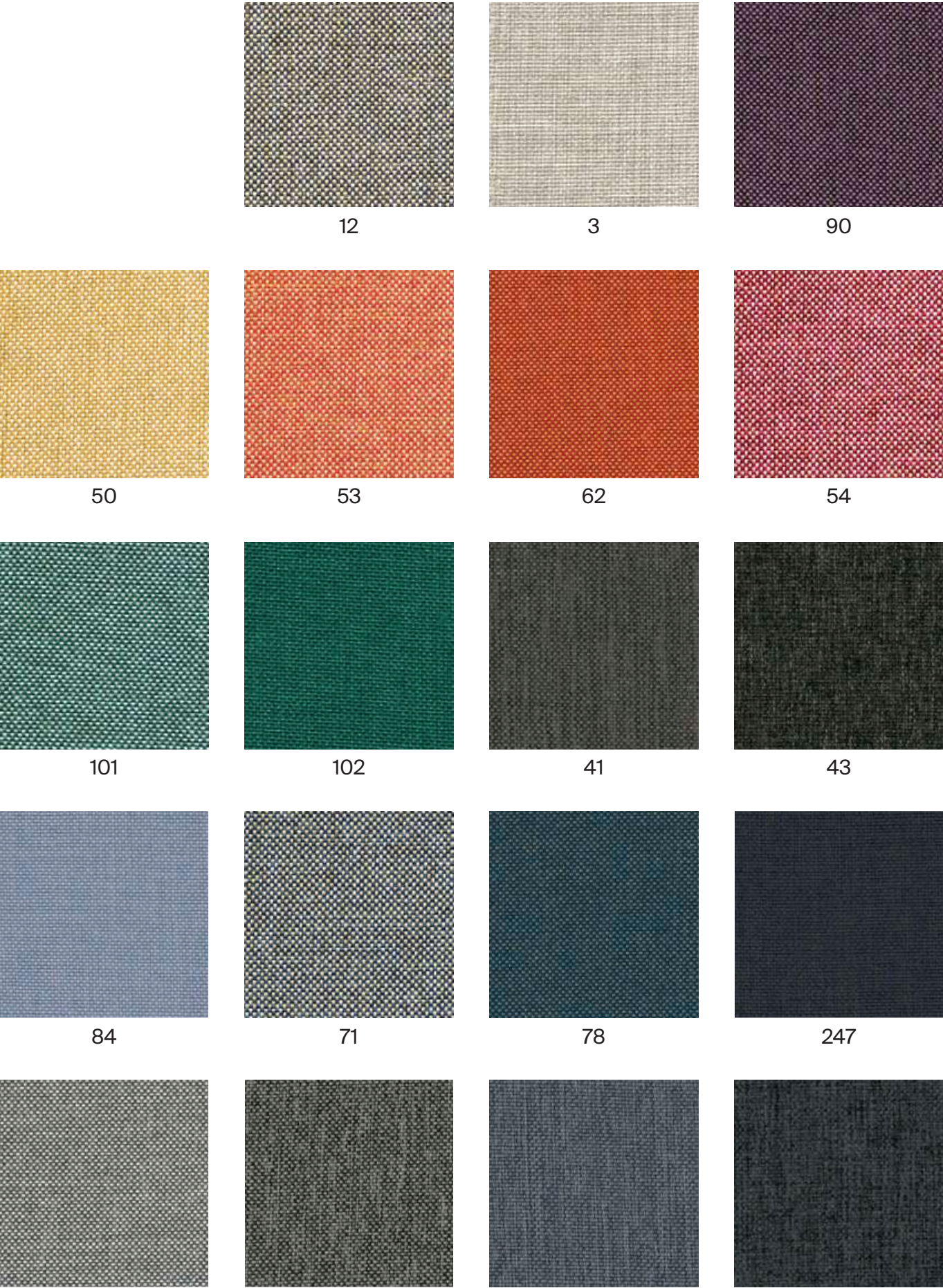


\*\*\*Batch to batch variations may occur within commercial tolerances.



Note:

- The real colours and tones of the fabrics may differ from the digital image due to the scan process and the colour calibration of the different screens. Always request real fabric samples before ordering.
- Consult our Fabric and Leather Matrix to know about the availability of this material by product line.





# G2 - CORA

## TECHNICAL DATA

- Composition:**  
100% polyester.
- Light fastness:**  
5 EN ISO 105-B02, Method 2.
- Abrasion:**  
83.000 Martindale EN ISO 12947-1, 2.
- Resistance to pilling:**  
4, EN ISO 12945-2:2002.
- Rubbing fastness in humid state:**  
5, ISO 105-X12:2001.
- Rubbing solvents:**  
5, ISO 105-X12:2001.
- Seam strength:**  
Warp 2,5mm.  
Weft 3,7mm, ISO 13936-2.
- Tear strength:**  
Warp exceed 154,2N.  
Weft exceed 112,3N, EN ISO 13937-3.
- Flammability:**  
EN 1021 - 1 (cigarette).

**Width:** 140cm  
**Weight:** 330gr/m²



\*\*\*Batch to batch variations may occur within commercial tolerances.

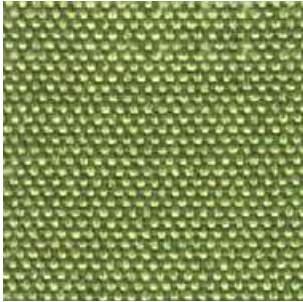


Note:

- The real colours and tones of the fabrics may differ from the digital image due to the scan process and the colour calibration of the different screens. Always request real fabric samples before ordering.
- Consult our Fabric and Leather Matrix to know about the availability of this material by product line.



21



32



48



60



65



12



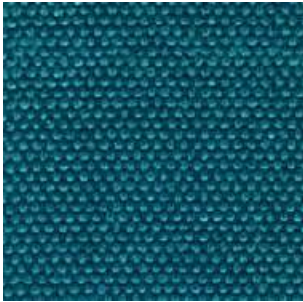
40



115



27



17



37



18



38



3



14



20



2



# G2 - HILTON

## TECHNICAL DATA

**Composition:**  
100% polyester.

**Light fastness:**  
4, ISO 105 B02:1994.

**Abrasion:**  
>25.000 Martindale ISO 12947-2:1998.

**Resistance to pilling:**  
4 - 5, ISO 12945-2.

**Tear strength:**  
Warp 63N.  
Weft 63N, ISO13937-3:2000.

**Dye fastness to rubbing:**  
Wet 4 - 5. Dry 4 - 5, ISO 105X12:2001.

**Width:** 140cm  
**Weight:** 380gr/m²



\*\*\*Batch to batch variations may occur within commercial tolerances.



Note:

- The real colours and tones of the fabrics may differ from the digital image due to the scan process and the colour calibration of the different screens. Always request real fabric samples before ordering.
- Consult our Fabric and Leather Matrix to know about the availability of this material by product line.





# G2 - ADDO

## TECHNICAL DATA

- Composition:  
80% polyester, 20% cotton.
- Light fastness:  
5, ISO 105 B02, Method 2.
- Abrasion:  
40.000 Martindale ISO 12947-1, 2.
- Resistance to pilling:  
4, ISO 12945-2:002.
- Rubbing fastness in humid state:  
3, ISO 105-X12:2001.
- Rubbing solvents:  
4 - 5, ISO 105-X12:2001.
- Seam strength:  
Warp 3mm.  
Weft 2mm, ISO 13936-2.
- Tear strength:  
Warp exceed 175,1N.  
Weft exceed 120,7N, EN ISO 13937-3.
- Flammability:  
EN 1021 - 1 (cigarette).

Width: 140cm  
Weight: 365gr/m²



\*\*\*Batch to batch variations may occur within commercial tolerances.



Note:  
- The real colours and tones of the fabrics may differ from the digital image due to the scan process and the colour calibration of the different screens. Always request real fabric samples before ordering.  
- Consult our Fabric and Leather Matrix to know about the availability of this material by product line.





# G2 - RENO

## TECHNICAL DATA

- Composition:**  
100% P.V.C.
- Light fastness:**  
6 - 7, ISO 105 B02.
- Abrasion:**  
>45.000 Martindale EN ISO 12947.
- Breaking strength:**  
Warp 360.  
Weft 150 EN ISO 13934-1  
UNE-EN ISO 1421.
- Tear strength:**  
Warp 23.  
Weft 26 EN ISO 13937-3.
- Resistance to pilling:**  
5, ISO 12945-2:2000.
- Fastness to rubbing:**  
Wet 4 - 5.  
Dry 4 - 5, ISO 105 X12.

**Width:** 140cm  
**Weight:** 540gr/m²



\*\*\*Batch to batch variations may occur within commercial tolerances.

Note:  
- The real colours and tones of the fabrics may differ from the digital image due to the scan process and the colour calibration of the different screens. Always request real fabric samples before ordering.  
- Consult our Fabric and Leather Matrix to know about the availability of this material by product line.



# G3 - CALMA<sup>NEW</sup>

## TECHNICAL DATA

**Composition:**  
Topcoat: 70% Vinyl, 30% P.U.  
Backing: 100% Microfiber Polyester.

**Light fastness:**  
>4.

**Abrasion:**  
>100.000 Martindale.

**Breaking strength:**  
Warp >180N.  
Weft >330N, ISO 1421.

**Tear strength:**  
Warp >25N/cm.  
Weft >28N/cm, ISO 4674-1.

**Flex Bally:**  
>100.000 cycles.

**Width:** 140cm.  
**Weight:** 853gr/m².



\*\*\*Batch to batch variations may occur within commercial tolerances.

Note:  
- The real colours and tones of the fabrics may differ from the digital image due to the scan process and the colour calibration of the different screens. Always request real fabric samples before ordering.  
- Consult our Fabric and Leather Matrix to know about the availability of this material by product line.





# G3 - RIVET <sup>NEW</sup>

By Camira

## TECHNICAL DATA

- Composition:**  
100% REPREVE® recycled polyester.
- Light fastness:**  
6, EN ISO 105-B02: 2014, Method 3.
- Abrasion:**  
≥80.000 Martindale EN ISO 12947-2: 2016
- Fastness to rubbing:**  
Wet 4.  
Dry 4, ISO 105 X12.
- Flammability:**  
EN 1021 - 1 (cigarette).  
EN 1021 - 2 (match).  
BS 7176 Low Hazard.  
UNI 9175 Class 1 IM.
- Environment:**  
Complies with EU Ecolabel.  
Certificate Indoor Advantage™ Gold.

**Width:** 140cm  
**Weight:** 280gr/m²



\*\*\*Batch to batch variations may occur within commercial tolerances.



Note:

- The real colours and tones of the fabrics may differ from the digital image due to the scan process and the colour calibration of the different screens. Always request real fabric samples before ordering.
- Consult our Fabric and Leather Matrix to know about the availability of this material by product line.



26



10



14



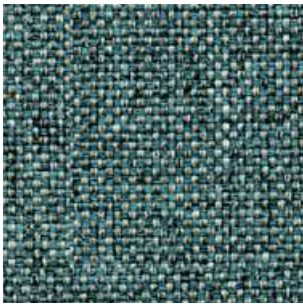
09



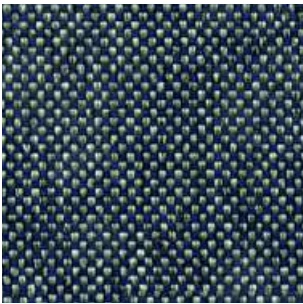
36



11



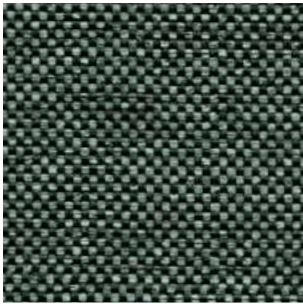
21



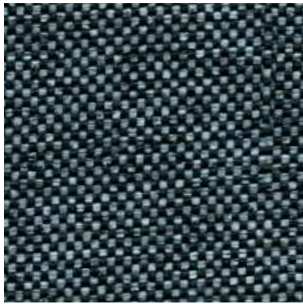
27



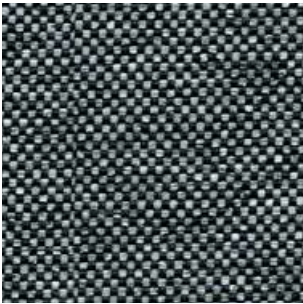
24



34



48



50



37



# G3 - ERA <sup>NEW</sup>

By Camira

### TECHNICAL DATA

- Composition:**  
100% polyester.
- Light fastness:**  
5, EN ISO 105 B02.
- Abrasion:**  
≥100.000 Martindale EN ISO 12947.
- Fastness to rubbing:**  
Wet 4.  
Dry 4, ISO 105 X12.
- Flammability:**  
EN 1021 - 1 (cigarette).  
EN 1021 - 2 (match).  
BS 7176 Low Hazard.  
EN 13501-1 Adhered Class B, s1, d0.  
EN 13501-1 Un-adhered Class C, s1, d0.
- Environment:**  
OEKO-TEX® Standard 100.  
Certificate Indoor Advantage™ Gold.

**Width:** 140cm  
**Weight:** 320gr/m²

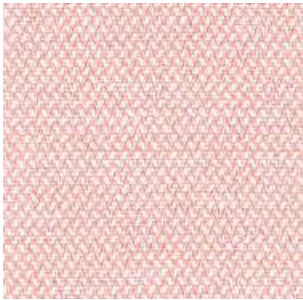


\*\*\*Batch to batch variations may occur within commercial tolerances.



Note:

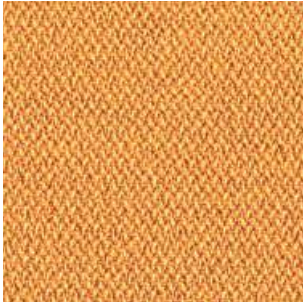
- The real colours and tones of the fabrics may differ from the digital image due to the scan process and the colour calibration of the different screens. Always request real fabric samples before ordering.
- Consult our Fabric and Leather Matrix to know about the availability of this material by product line.



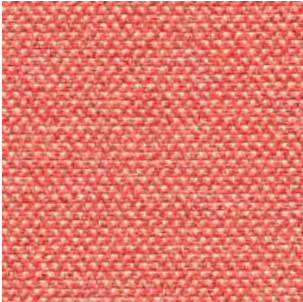
19



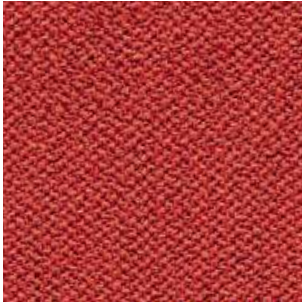
3



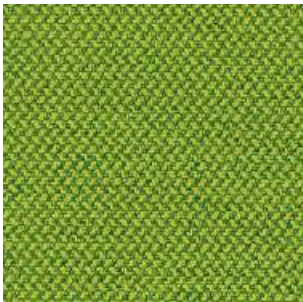
27



26



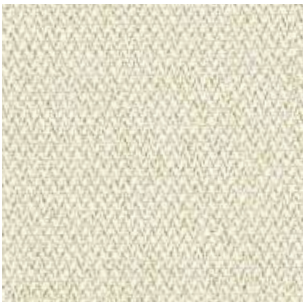
29



16



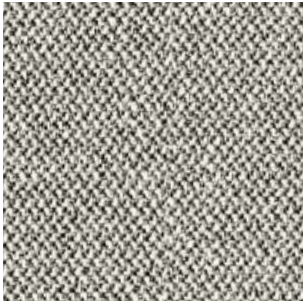
34



1



2



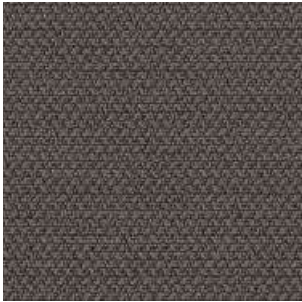
45



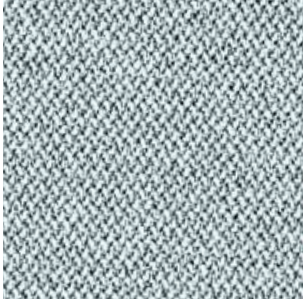
11



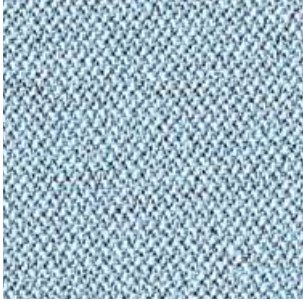
13



21



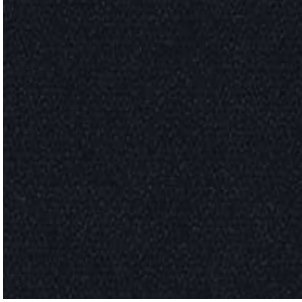
46



39



40



14



# G3 - MEDLEY

By Gabriel

## TECHNICAL DATA

- Composition:  
100% polyester.
- Light fastness:  
5 - 7, EN ISO 105 B02.
- Abrasion:  
75.000 Martindale EN ISO 12947-2.
- Resistance to pilling:  
4, EN ISO 12945-2.
- Fastness to rubbing:  
Wet 4 - 5.  
Dry 4 - 5, ISO 105 X12.
- Flammability:  
BS EN 1021 1&2 Cigarette and Match.  
BS EN 1021-1 Cigarette.  
BS 5852 Part 1 0,1 Cigarette and Match.  
BS 476 Part 7, class 2.  
Class Uno UNI 9174 - UNI 8457.  
ÖNORM B 3825-B2-3800-Q1 UK.  
CA TB 117-2013  
ASTM E 84.
- Environment:  
Oeko-Tex® standard 100  
100% free of heavy metals.

Width: 140cm  
Weight: 510gr/m²



\*\*\*Batch to batch variations may occur within commercial tolerances.



Note:

- The real colours and tones of the fabrics may differ from the digital image due to the scan process and the colour calibration of the different screens. Always request real fabric samples before ordering.
- Consult our Fabric and Leather Matrix to know about the availability of this material by product line.



65011



62054



61003



67002



68005



63064



64019



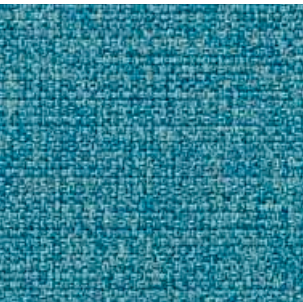
63016



63063



66008



67006



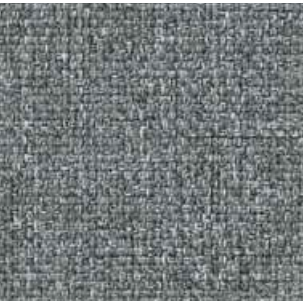
66010



61004



60003



60167



60004



60999



# G4 - MAIN LINE FLAX <sup>NEW</sup>

By Camira

TECHNICAL DATA

- Composition:  
75% virgin wool, 25% flax.
- Light fastness:  
5, ISO 105 B02.
- Abrasion:  
≥50.000 Martindale EN ISO 12947-2:1999.
- Resistance to pilling:  
4 - 5, ISO 12945-2.
- Fastness to rubbing:  
Wet 3.  
Dry 4, ISO 105 X12.
- Flammability:  
EN 1021 - 1 (cigarette).  
EN 1021 - 2 (match).  
BS 7176 Low Hazard.  
BS 5852 Ignition source 5.  
BS 7176 Medium Hazard.  
NF D 60-013.  
ÖNORM B 3825 & A 3800-1.  
UNI 9175 Class 1 IM.  
BS 5867-2: Type B Curtains & Drapes.  
IMO FTP Code (Part 8).
- Environment:  
Complies with EU Ecolabel.  
Certificate Indoor Advantage™ Gold.

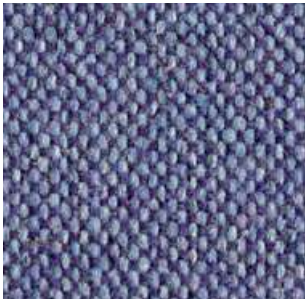
Width: 140cm  
Weight: 437gr/m<sup>2</sup>



\*\*\*Batch to batch variations may occur within commercial tolerances.



Note:  
- The real colours and tones of the fabrics may differ from the digital image due to the scan process and the colour calibration of the different screens. Always request real fabric samples before ordering.  
- Consult our Fabric and Leather Matrix to know about the availability of this material by product line.



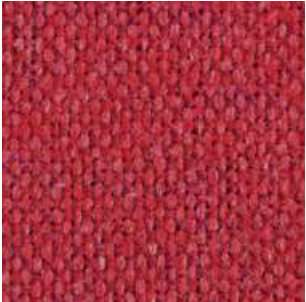
27



17



8



1



40



7



9



25



32



2



22



35



36



12



23



16



28



# G4 - CONNECT<sup>NEW</sup>

By Gabriel

## TECHNICAL DATA

- Composition:**  
48% wool, 41% recycled polyester, 9% polyamide, 2% polyester.
- Light fastness:**  
5 - 7, ISO 105 B02.
- Abrasion:**  
90,000 Martindale EN ISO 12947-2.
- Resistance to pilling:**  
4 - 5, ISO 12945-2.
- Fastness to rubbing:**  
Wet 4 - 5.  
Dry 4 - 5, ISO 105 X12.
- Flammability:**  
EN 1021 - 1 (cigarette).  
EN 1021 - 2 (match).  
BS 5852 Crib 5.  
CA TB 117-2013.  
Class Uno UNI 9175 Class 1 I EMME.
- Environment:**  
Oeko-Tex® standard 100.  
Complies with EU Ecolabel.

**Width:** 140cm  
**Weight:** 370gr/m<sup>2</sup>



\*\*\*Batch to batch variations may occur within commercial tolerances.



Note:  
- The real colours and tones of the fabrics may differ from the digital image due to the scan process and the colour calibration of the different screens. Always request real fabric samples before ordering.  
- Consult our Fabric and Leather Matrix to know about the availability of this material by product line.



60147 61208 68229  
62109 63107 64229 64230  
67113 67115 61209 61210  
66205 65127 60152 60999



# G4 - VALENCIA

By Spradling

## TECHNICAL DATA

- Composition:
- Topcoat: 100% Vinyl.

Backing: 100% Polyester Hi-Loft<sup>2</sup>™.
- Light fastness:
- 1000 hours, XENOTEST DIN 54004/NTC 1479.
- Abrasion:
- 300.000 cycles de Martindale EN ISO 12947:1999 Part 2.
- Cold crack resistance:
- 23°C.
- Characteristics:
- Antimicrobial protection.

Anibacterial protection.

Antimycotic protection.
- Flammability:
- EU: EN 1021 Part 1 y 2.

ES: UNE 23.727-90 1R/M.2.

FR: NF P 92-503/M2.

DE: DIN 4102 B2.

IT: UNI 9175 (1987) / UNI 9175/FA1 (1994) Classe 1.IM (UNO I EMME).

AT: ÖNORM B 3825, Gruppe 1 - Schwerbrennbares Verhalten.

AT: ÖNORM A 3800 Teil 1, Qualmbildungsklasse Q1 - schwachqualmend.

IMO FTP 2010 Code MSC.307 (88) Part 8 3.1 & 3.2.

US: FMVSS 302.

US: FAR 25/853.

(MED) Marine Equipment Directive.

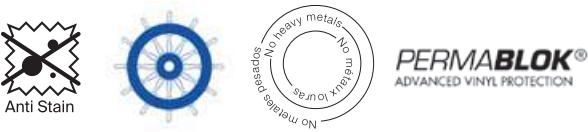
ECE R118.02 (replaces Directive 95/28/CE) Annexes 6, 7 & 8.

EN 71-2:2006+A1:2007 - Toy safety - Parte 2: Inflamability.

Width: 140cm  
Weight: 685gr/m²

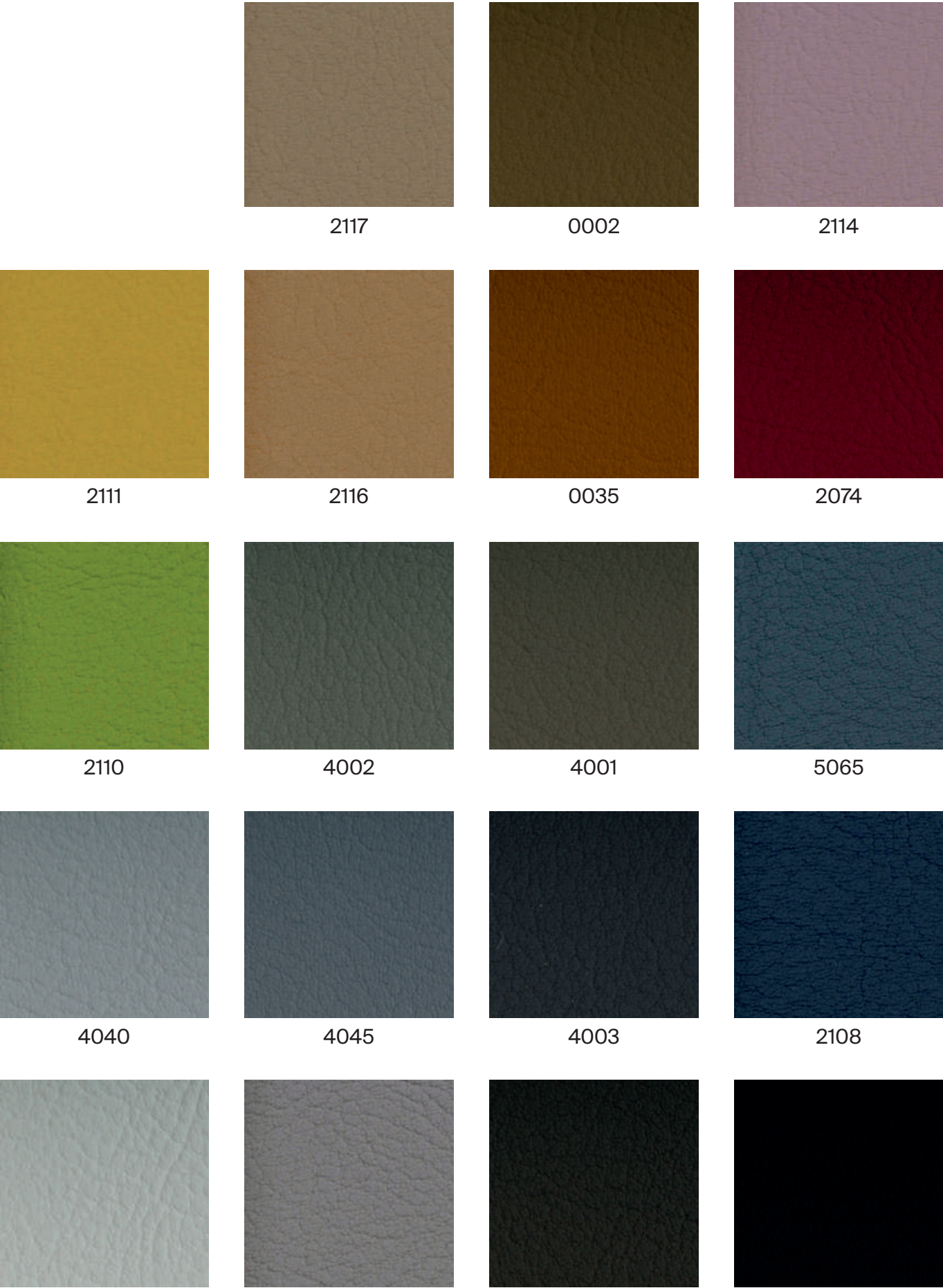


\*\*\*Batch to batch variations may occur within commercial tolerances.



Note:

- The real colours and tones of the fabrics may differ from the digital image due to the scan process and the colour calibration of the different screens. Always request real fabric samples before ordering.
- Consult our Fabric and Leather Matrix to know about the availability of this material by product line.





# G4 - ASPECT

By Camira

## TECHNICAL DATA

- Composition:  
75% trevira, 25% polyester.
- Light fastness:  
5 - 7, EN ISO 105 B02.
- Abrasion:  
≥50.000 Martindale EN ISO 12947.
- Fastness to rubbing:  
Wet 4.  
Dry 4, ISO 105 X12.
- Flammability:  
EN 1021 - 1 (cigarette).  
EN 1021 - 2 (match).  
BS 7176 Low Hazard.  
BS 5852 Ignition source 5.  
(sobre 50kg/ m3 foam CMHR).  
BS 7176 Medium Hazard.  
(sobre 50kg/m3 foam CMHR).  
DIN 4102 B1.  
NF D 60-013 (sobre 50kg/m3 foam CMHR).  
ÖNORM B 3825 & A 3800-1 (sobre 58kg/m3 foam CMHR).  
UNI 9175 Class 1 IM.
- Environment:  
OEKO-TEX® Standard 100.  
Certificate Indoor Advantage™ Gold.

Width: 140cm  
Weight: 470gr/m²



\*\*\*Batch to batch variations may occur within commercial tolerances.

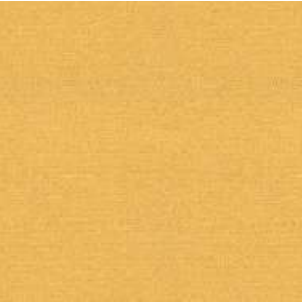


Note:

- The real colours and tones of the fabrics may differ from the digital image due to the scan process and the colour calibration of the different screens. Always request real fabric samples before ordering.
- Consult our Fabric and Leather Matrix to know about the availability of this material by product line.



8



1



14



17



18



2



3



6



4



25



19



26



24



11



15



29



31



# G4 - STEP

By Gabriel

## TECHNICAL DATA

- Composition:  
100% trevira CS.
- Light fastness:  
5 - 7, ISO 105 B02.
- Abrasion:  
100.000 Martindale EN ISO 12947.
- Resistance to pilling:  
4 - 5, ISO 12945-2.
- Fastness to rubbing:  
Wet 4 - 5. - Dry 4 - 5, ISO 105 X12.
- Flammability:  
IMO MSC 307(88) Annex 1 part 8.  
MED.  
Certificate IMO.  
DIN 4102 B1.  
NFP 92-503/504/505 M1.  
BS EN 1021 1&2 Cigarette and Match.  
BS EN 1021-1 Cigarette.  
BS 5852 Part 1 0,1 Cigarette and Match.  
BS 5852 Crib 5.  
ÖNORM B 3825-B1-3800-Q1 UK.  
FAR/JAR 25.853 (a) (i) (ii).  
BS 7176 Medium hazard.  
AM 18 - NF D 60-013-(only for fabric).  
CA TB 117-2013.  
Class Uno UNI 9175 Class 1 I EMME.  
DIN EN 13501-1 B-s1,d0.
- Environment:  
Oeko-Tex - EU Ecolabel - 100% free of heavy metals.

Width: 140cm  
Weight: 470gr/m²



\*\*\*Batch to batch variations may occur within commercial tolerances.



Note:  
- The real colours and tones of the fabrics may differ from the digital image due to the scan process and the colour calibration of the different screens. Always request real fabric samples before ordering.  
- Consult our Fabric and Leather Matrix to know about the availability of this material by product line.





# G5 - DOLCE <sup>NEW</sup>

By Spradling

## TECHNICAL DATA

- Composition:**
  - Topcoat: 100% polyurethane.
  - Backing: 100% rayon.
- Light fastness:**
  - 40 hours, XENOTEST DIN 54004/NTC 1479.
- Abrasion:**
  - ≥300.000 Martindale EN ISO 12947:1999 Part 2.
- Cold crack resistance:**
  - 23°C.
- Characteristics:**
  - Antibacterial protection.
- Flammability:**
  - EU: EN 1021 Part 1 y 2
  - US: FMVSS 302
  - UK: BS 5852 Part 2 CRIB 5
  - IMO FTP 2010 Code MSC.307 (88) Part 8 3.1 & 3.2.

**Width:** 140cm  
**Weight:** 685gr/m²



\*\*\*Batch to batch variations may occur within commercial tolerances.

Note:  
- The real colours and tones of the fabrics may differ from the digital image due to the scan process and the colour calibration of the different screens. Always request real fabric samples before ordering.  
- Consult our Fabric and Leather Matrix to know about the availability of this material by product line.



6703



6706



6708



6719



6714



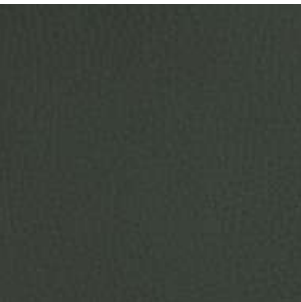
6709



6711



6712



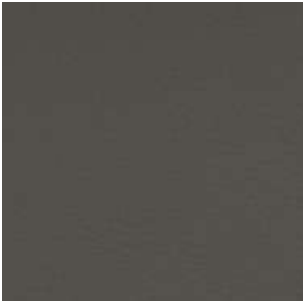
6717



6729



6726



6727



6736



6735



6734



6724



6728

# G5 - SYNERGY <sup>NEW</sup>

By Camira

## TECHNICAL DATA

- Composition:**  
95% virgin wool, 5% polyamide.
- Light fastness:**  
5, ISO 105-B02.
- Abrasion:**  
≥100.000 Martindale EN ISO 12947.
- Fastness to rubbing:**  
Wet 4.  
Dry 4, ISO 105 X12.
- Flammability:**  
EN 1021 - 1 (cigarette).  
EN 1021 - 2 (match).  
BS 7176 Low Hazard.  
NF D 60-013.  
ÖNORM B 3825 & A 3800-1 (sobre 58kg/m³ Foam CMHR).  
UNI 9175 Classe 1 IM.  
EN 13501-1 Adhered Class D, s1, d0.  
EN 13501-1 Un-adhered Class E, s2, d0.  
IMO FTP Code (Part 8).
- Environment:**  
Complies with EU Ecolabel.  
Certificate Indoor Advantage™ Gold.

**Width:** 140cm  
**Weight:** 400gr/m²



\*\*\*Batch to batch variations may occur within commercial tolerances.



Note:

- The real colours and tones of the fabrics may differ from the digital image due to the scan process and the colour calibration of the different screens. Always request real fabric samples before ordering.
- Consult our Fabric and Leather Matrix to know about the availability of this material by product line.



74



45



43



73



84



32



22



37



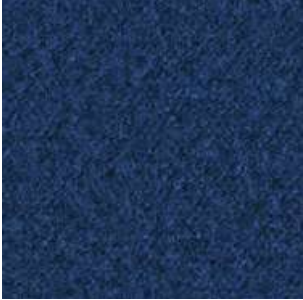
34



49



59



62



41



8



16



17



27



# G5 - REMIX

By Kvadrat

## TECHNICAL DATA

- Designer:  
Giulio Ridolfo.
- Composition:  
90% new wool, 10% nylon.
- Light fastness:  
5 - 7, ISO 105-B02.
- Abrasion:  
100.000 Martindale EN ISO 12947.
- Resistance to pilling:  
4, EN ISO 12945.
- Flammability:  
AS/NZS 1530.3.  
BS 5852 part 1.  
EN 1021-1/2.  
IMO FTP Code 2010: Part 8.  
NF D 60 013.  
NFPA 260.  
Önorm B1/Q1.  
UNI 9175 1IM.  
US Cal. Bull. 117-2013.
- Environment:  
Complies with EU ecolabel “The Flower”.  
100% free of heavy metals.

Width: 140cm  
Weight: 415gr/m²

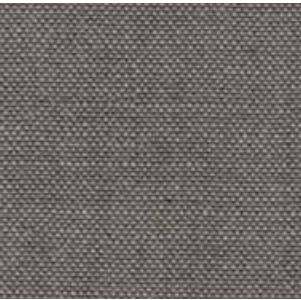


\*\*\*Batch to batch variations may occur within commercial tolerances.



Note:

- The real colours and tones of the fabrics may differ from the digital image due to the scan process and the colour calibration of the different screens. Always request real fabric samples before ordering.
- Consult our Fabric and Leather Matrix to know about the availability of this material by product line.



136



433



452



346



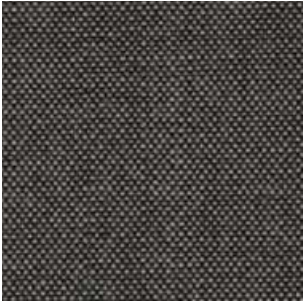
653



326



933



152



356



733



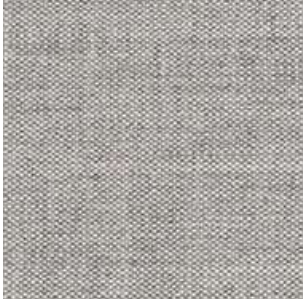
743



266



773



123



143



163



183



# G5 - CANVAS

By Kvadrat

## TECHNICAL DATA

- Designer:  
Giulio Ridolfo.
- Composition:  
90% new wool, 10% nylon.
- Light fastness:  
5 - 7, ISO 105-B02.
- Abrasion:  
100.000 Martindale EN ISO 12947.
- Resistance to pilling:  
4 - 5, EN ISO 12945.
- Flammability:  
AS/NZS 1530.3.  
BS 5852 Crib 5 when flameprotected.  
BS 5852, ignition source 3.  
BS 5852 part 1.  
DIN 4102 B2.  
IMO FTP Code 2010: Part 8.  
NF D 60 013.  
NFPA 260.  
Önorm B1/Q1.  
UNI 9175 1IM.  
US Cal. Bull. 117-2013.
- Environment:  
Complies with EU ecolabel “The Flower”.  
100% free of heavy metals.

Width: 140cm  
Weight: 480gr/m².

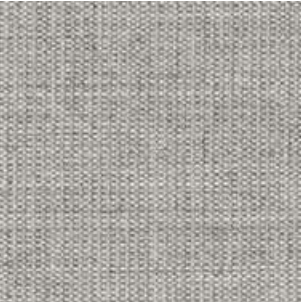


\*\*\*Batch to batch variations may occur within commercial tolerances.

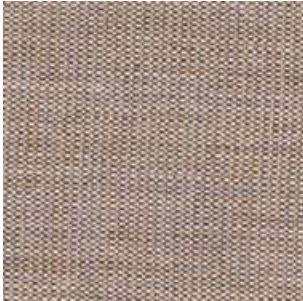


Note:

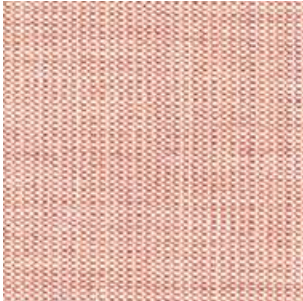
- The real colours and tones of the fabrics may differ from the digital image due to the scan process and the colour calibration of the different screens. Always request real fabric samples before ordering.
- Consult our Fabric and Leather Matrix to know about the availability of this material by product line.



124



244



614



654



954



964



454



424



264



364



684



794



174



# G6 - STEELCUT TRIO

By Kvadrat

TECHNICAL DATA

- Designer:**  
Frans Dijkmeijer and Giulio Ridolfo.
- Composition:**  
90% new wool, 10% nylon.
- Light fastness:**  
5 - 7 ISO 105-B02.
- Abrasion:**  
100.000 Martindale EN ISO 12947.
- Resistance to pilling:**  
4, EN ISO 12945.
- Flammability:**  
AS/NZS 1530.3  
AS/NZS 3837 class 2.  
BS 5852 part 1.  
DIN 4102 B2.  
EN 1021-1/2.  
IMO FTP Code 2010: Part 8.  
NF D 60 013.  
NFPA 260.  
Önorm B1/Q1.  
UNI 9175 1IM.  
US Cal. Bull. 117-2013.
- Environment:**  
Complies with EU ecolabel “The Flower”.  
100% free of heavy metals.

**Width:** 140cm  
**Weight:** 770gr/m²

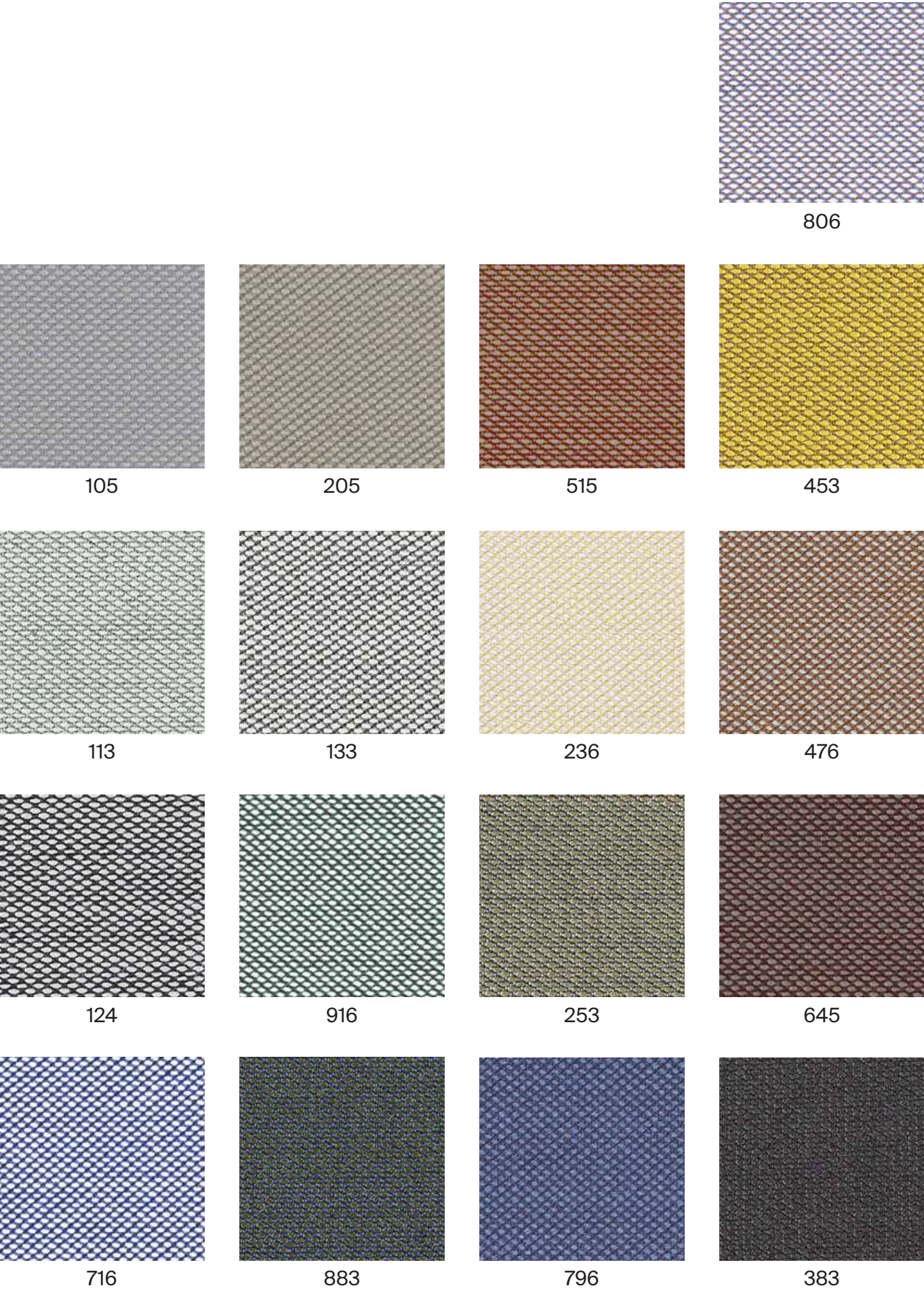


\*\*\*Batch to batch variations may occur within commercial tolerances.



Note:

- The real colours and tones of the fabrics may differ from the digital image due to the scan process and the colour calibration of the different screens. Always request real fabric samples before ordering.
- Consult our Fabric and Leather Matrix to know about the availability of this material by product line.



G6 - STEELCUT TRIO



# G6 - FIORD

By Kvadrat

## TECHNICAL DATA

- Designer:**  
Louise Sigvardt & Tone Barnung.
- Composition:**  
92% new wool, 8% nylon.
- Light fastness:**  
5 - 7, ISO 105-B02.
- Abrasion:**  
60.000 Martindale EN ISO 12947.
- Resistance to pilling:**  
4 - 5, EN ISO 12945.
- Flammability:**  
AS/NZS 3837 class 2.  
ASTM E84 Class A Adhered.  
ASTM E84 Class A Unadhered.  
BS 5852 part 1.  
EN 1021-1/2.  
IMO FTP Code 2010:Part 8.  
NF D 60 013.  
NFPA 260.  
ÖNORM B1/Q1.  
UNI 9175 1IM.  
US Cal. Bull. 117-2013.
- Environment:**  
Complies with EU ecolabel “The Flower”  
100% free of heavy metals.

**Width:** 140cm  
**Weight:** 500gr/m²

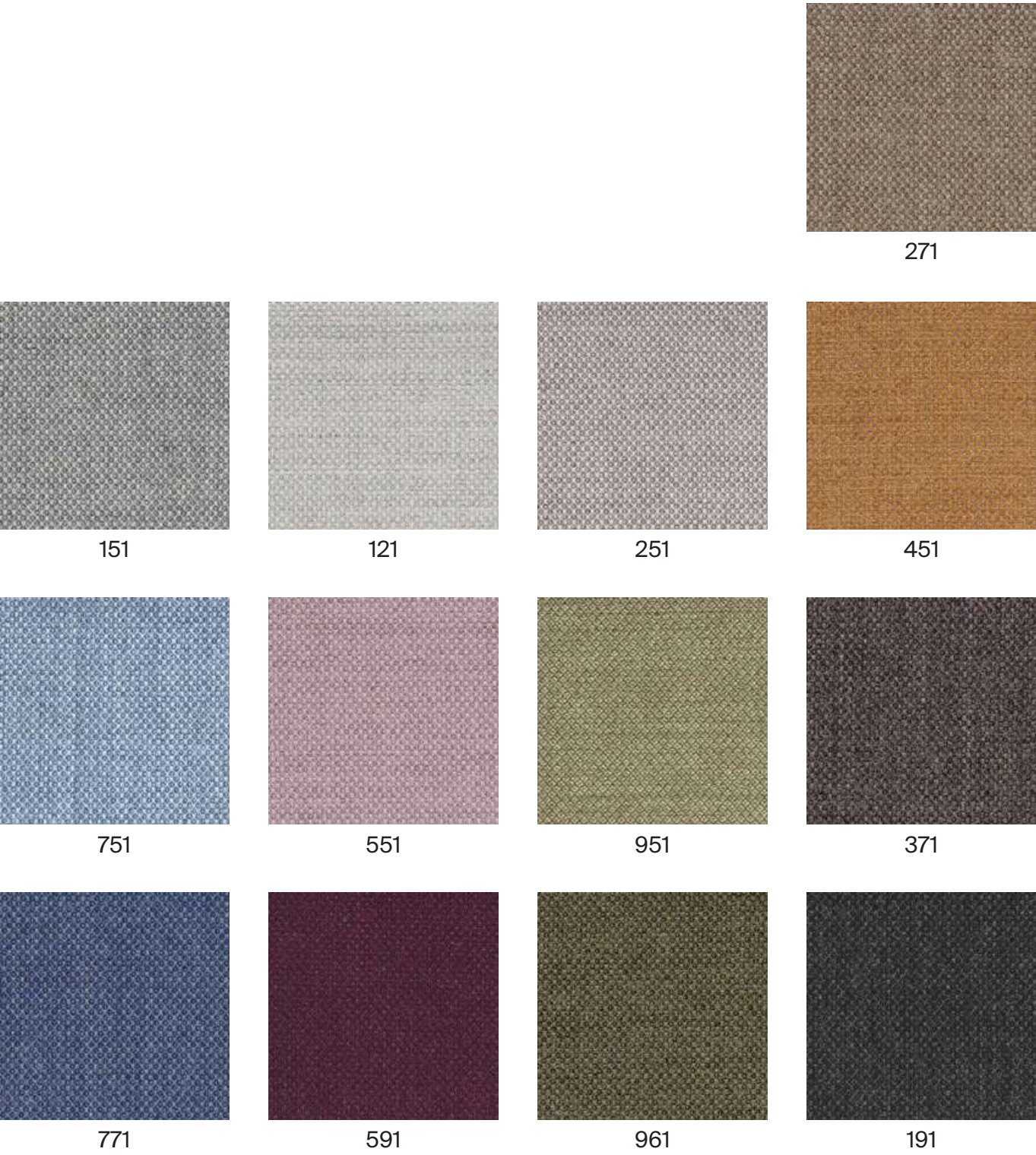


\*\*\*Batch to batch variations may occur within commercial tolerances.



Note:

- The real colours and tones of the fabrics may differ from the digital image due to the scan process and the colour calibration of the different screens. Always request real fabric samples before ordering.
- Consult our Fabric and Leather Matrix to know about the availability of this material by product line.





# G7 - HALLINGDAL

By Kvadrat

## TECHNICAL DATA

- Designer:  
Nanna Ditzel.
- Composition:  
70% new wool, 30% viscose.
- Light fastness:  
5 - 7 ISO 105-B02.
- Abrasion:  
100.000 Martindale EN ISO 12947.
- Resistance to pilling:  
3, EN ISO 12945.
- Flammability:  
AS/NZS 1530.3.  
AS/NZS 3837.  
BS 5852 Crib 5.  
BS5852 part 1.  
DIN 4102 B2.  
EN 1021-1/2.  
IMO FTP Code 2010: Part 8.  
NF D 60 013.  
NFPA 260.  
Önorm B1/Q1.  
UNI 9175 1IM.  
US Cal. Bull. 117 – 2013.
- Environment:  
Complies with EU ecolabel “The Flower”.

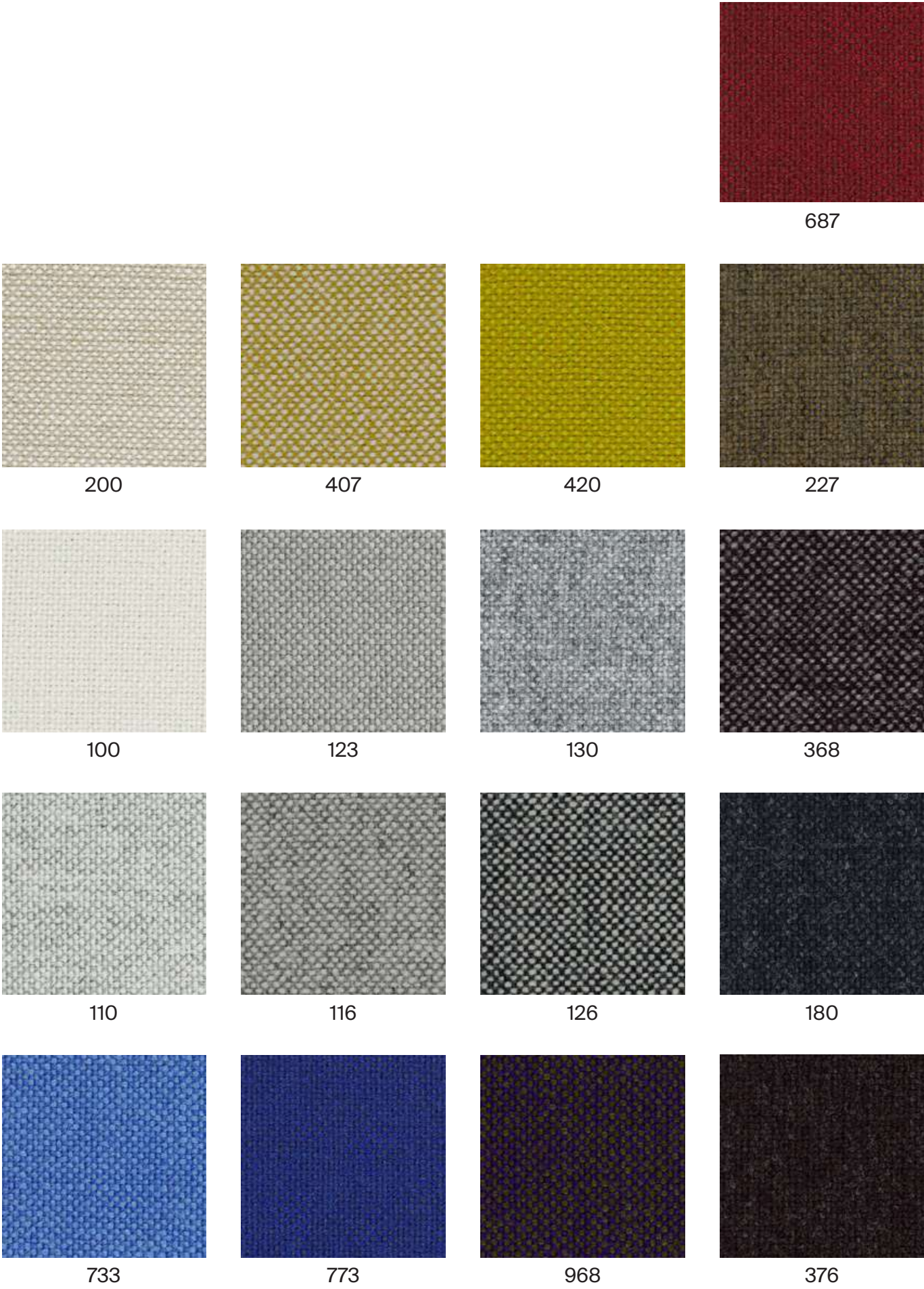
Width: 140cm  
Weight: 795gr/m²



\*\*\*Batch to batch variations may occur within commercial tolerances.



Note:  
- The real colours and tones of the fabrics may differ from the digital image due to the scan process and the colour calibration of the different screens. Always request real fabric samples before ordering.  
- Consult our Fabric and Leather Matrix to know about the availability of this material by product line.





# G10 - LEATHER

## TECHNICAL DATA

- Composition:

Cow leather.
- Light fastness:

≥4/5, UNI EN ISO 105B02.
- Fastness to rubbing:

Wet ≥4 (150 cycles).

Dry ≥4 (500 cycles).

Perspiration ≥4 (80 cycles), UNI EN ISO 11640: 1998 - 11641 (pH8).
- Tear strength:

>20N, EN ISO 3377-1.
- Determination of PH:

>3,5, EN ISO 4045.
- Adhesion of the finish:

≥2, UNI EN ISO 11644.
- Determination of dry ex resistance:

Without damage, UNI EN ISO 5402.
- Flammability:

Ignition source 0 (cigarette).

Ignition source 1 (match).

BS 5852-1979.

BS EN 1021-1-2:2006.
- Thickness:

0,9 - 1,1mm
- Average surface:

4,8 - 5,0m²
- Maintenance:

Wash with neutral soap and water or with a cleaning product for leather.

\*\*\*Batch to batch variations may occur within commercial tolerances.

Note:

- The real colours and tones of the fabrics may differ from the digital image due to the scan process and the colour calibration of the different screens. Always request a real leather sample before ordering.
- Consult our Fabric and Leather Matrix to know about the availability of this material by product line.





# G11 - LEATHER

## TECHNICAL DATA

- Composition:**  
Cow leather.
- Light fastness:**  
≥5, UNI EN ISO 105B02.
- Fastness to rubbing:**  
Wet ≥4 (80 cycles).  
Dry ≥4 (500 cycles).  
Perspiration ≥4 (50 cycles), UNI EN ISO 11640 - 11641.
- Tear strength:**  
≥20N, EN ISO 3377-1.
- Determination of PH:**  
≥3,5 ≤0,7 EN ISO 4045.
- Adhesion of the finish:**  
≥2,5N / 10mm, UNI EN ISO 11644.
- Determination of dry flex resistance:**  
>50.000 cycles, UNI EN ISO 5402-1.
- Flammability:**  
Ignition source 0 (cigarette)  
Ignition source 1 (match), BS 5852-1:79.
- Thickness:**  
0,9 - 1,1mm
- Average surface:**  
4,8 - 5,0m²
- Maintenance:**  
Wash with neutral soap and water or with a cleaning product for leather.

\*\*\*Batch to batch variations may occur within commercial tolerances.

Note:  
- The real colours and tones of the fabrics may differ from the digital image due to the scan process and the colour calibration of the different screens. Always request a real leather sample before ordering.  
- Consult our Fabric and Leather Matrix to know about the availability of this material by product line.

